

## TwinStore

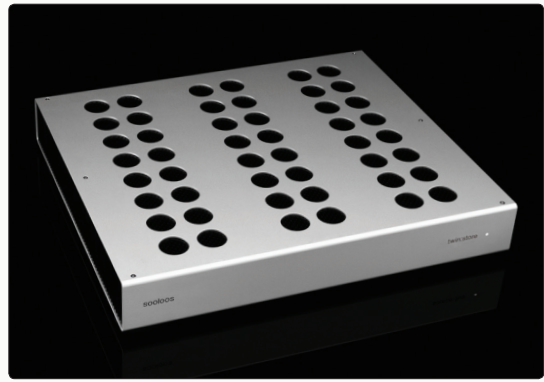
The Twinstore is a Network Attached Storage device. It has a pair of removable hard drive trays on its rear panel, each of which can be loaded with drives up to one terabyte capacity. One drive is for main storage and one is for backup storage. All mirroring is done automatically, giving zero downtime backup of your library.

With a pair of terabyte hard disks, your TwinStore will be able to hold 2400 albums simultaneously in both FLAC format (which you listen to at home for full quality) and MP3 format (which you can use on your ipod or other portable MP3 device.)

The TwinStore connects to the rest of your Sooloos system by a single ethernet connection, so it can be placed anywhere on your network. This allows silent operation in your listening environment. It can be connected using either Neutrik EtherCon connectors (supplied with the system) or standard CAT5/5e/6 cables with RJ-45 connectors.

Additional TwinStore components can be added without limit.

The operating system is stored in read-only flash memory, which greatly increases reliability because it cannot be corrupted.



### TwinStore Tech Specs:

#### Dimensions:

Size: 17" wide x 2.75" high x 14.6" deep  
Weight: 12.8 pounds

#### Network/Power Connections:

1 network connection, RJ-45 or Neutrik EtherCon  
Detachable external auto-sensing AC adaptor

#### Removable Drive Tray A:

Form Factor: 3.5 inch SATA  
Drive Type: Serial ATA (SATA) – 7200 RPM  
Connectors: SATA Data & SATA Power

#### Removable Drive Tray B:

Form Factor: 3.5 inch SATA  
Drive Type: Serial ATA (SATA) – 7200 RPM  
Connectors: SATA Data & SATA Power

#### Storage Capacity/Expandability:

1 Terabyte: Approx. 2400 albums  
Expandability: TwinStore components can be added without limit

#### ▼ TwinStore – Front View



#### ▼ TwinStore – Back View of Connections and Drive Bays

