

Source:One

The Source:One has a single-ended stereo RCA-type analog audio output and a S/PDIF digital audio output that mirrors the analog output. The analog output is an audiophile quality output that is at home even in a great system. It is fanless and has no moving parts, making it completely silent.

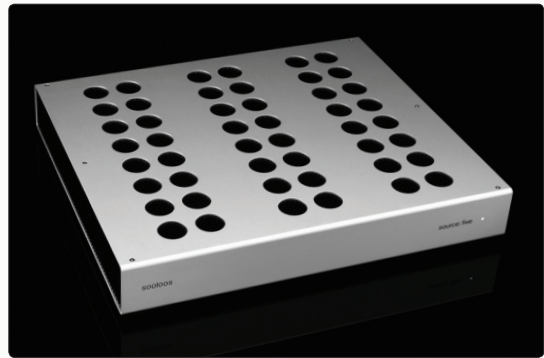
It also features an integrated four-port ethernet switch for connecting to other Sooloos devices and the Internet, allowing it to serve as the central communications hub for all other Sooloos components. Connections can be made using either the supplied Neutrik EtherCon connectors or standard CAT5/5e/6 cables with RJ-45 connectors.

The operating system is stored in read-only flash memory, which greatly increases reliability because it cannot be corrupted.

Because of its distributed design, a Sooloos system can support multiple source components. Expanding your system couldn't be simpler; just add source components for more zones.

Source:Five

The Source:Five is identical to the Source:One, but features five single-ended stereo RCA-type analog outputs and a single S/PDIF digital output.



Source Tech Specs:

Dimensions: (both models)

Size: 17" wide x 2.75" high x 14.6" deep
Weight: 12.8 pounds

Network/Power Connections:

4 network connections, RJ-45 or Neutrik EtherCon
Detachable external auto-sensing AC adaptor

Source:One

Audio Connections:

Analog: 1 unbalanced stereo pair, RCA type
Digital: 1 S/PDIF coaxial digital output, RCA type



Source:Five (Pictured Below)

Audio Connections:

Analog: 5 unbalanced stereo pairs, RCA type
Digital: 1 S/PDIF coaxial digital output, RCA type

▼ Source:Five – Front View



▼ Source:Five – Back View of Connections

